

## CALLING SYSTEM ITCS-1A-5/10/15

ITCS-1A-5/10/15 is control unit for indication and acceptance of call from more places. System is mostly used on vessels for calling from large refrigerating rooms containing more spaces or for call from cabins/toilets for disabled person. Control unit **ITCS-1A-5** can indicate call from up to 5, control unit **ITCS-1A-10** from up to 10 and control unit **ITCS-1A-15** from up to 15 calling places.

Power supply for ITCS-1A-5/10/15 is 24VDC, for 230VAC or 115VAC use rectifier ITPS-ADJ-1,5.

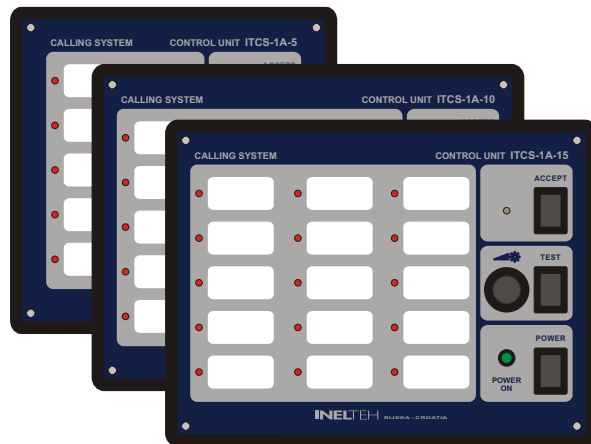
### PRINCIPLE OF OPERATION

By operating "POWER" switch on control unit power supply is turned on. Pressing push button "CALL" starts call. Audio and visual alarm (LE diode with corresponding place of call) on control unit and repeater unit (if exists) turns on. By pressing "ACCEPT" button audio alarm goes off but visual signalling remains until call is reset by push button "RESET" in place from where the call has been done. This feature insures that alarm will be present and visible until someone checks why and from where the call is done.

### ITCS-1A-5, ITCS-1A-10, ITCS-1A-15

Control unit for indication and acceptance of call

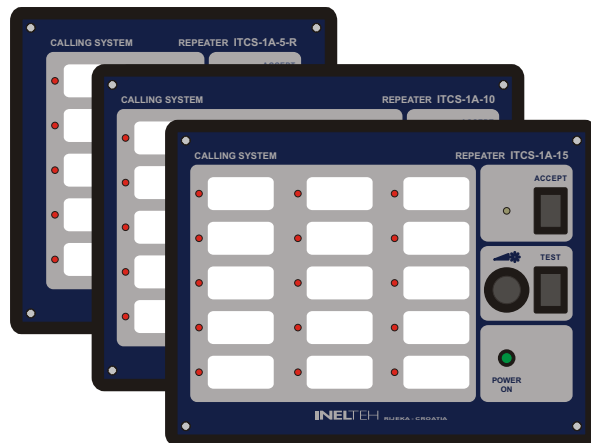
- ITCS-1A-5 for 2-5 calling lines
- ITCS-1A-10 for 6-10 calling lines
- ITCS-1A-15 for 11-15 calling lines
- Call is indicated by buzzer and red LE diode corresponding place of call - "POWER" switch to turn on/off whole system
- Power ON is indicated by green LE diode
- "ACCEPT" and "TEST" push button
- Flush mounting (bulkhead on request)
- Power supply 24VDC, for 230VAC or 115VAC use rectifier ITPS-ADJ-1,5
- Dimensions:
  - ITCS-1A-5: 144x144, cut-out: 138x138
  - ITCS-1A-10/15: 196x144, cut-out: 186x138



### ITCS-1A-5-R, ITCS-1A-10-R, ITCS-1A-15-R

Repeater unit for indication and acceptance of call

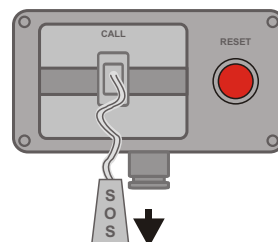
- Can not be used as stand alone system but contains all functions as control unit
- ITCS-1A-5-R for 2-5 calling lines
- ITCS-1A-10-R for 6-10 calling lines
- ITCS-1A-15-R for 11-15 calling lines
- Call is indicated by buzzer and red LE diode corresponding place
- Power supply from control unit
- Power ON is indicated by green LE diode
- "ACCEPT" and "TEST" push button
- Flush mounting (bulkhead on request)
- Dimensions:
  - ITCS-1A-5-R: 144x144, cut-out: 138x138
  - ITCS-1A-10/15: 196x144, cut-out: 186x138



### ITCS-C5

Unit for calling and call reset

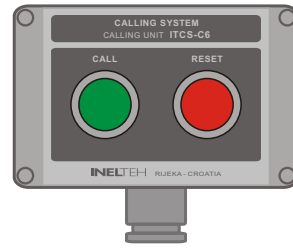
- Mostly used in bathrooms/toilets
- Call is done by pulling line - rope in direction marked with arrow
- Red bulb in push button lights when call is done, until call is reset
- Bulkhead mounting
- Dimensions: 184x95x81mm



**ITCS-C6**

Unit for calling and call reset

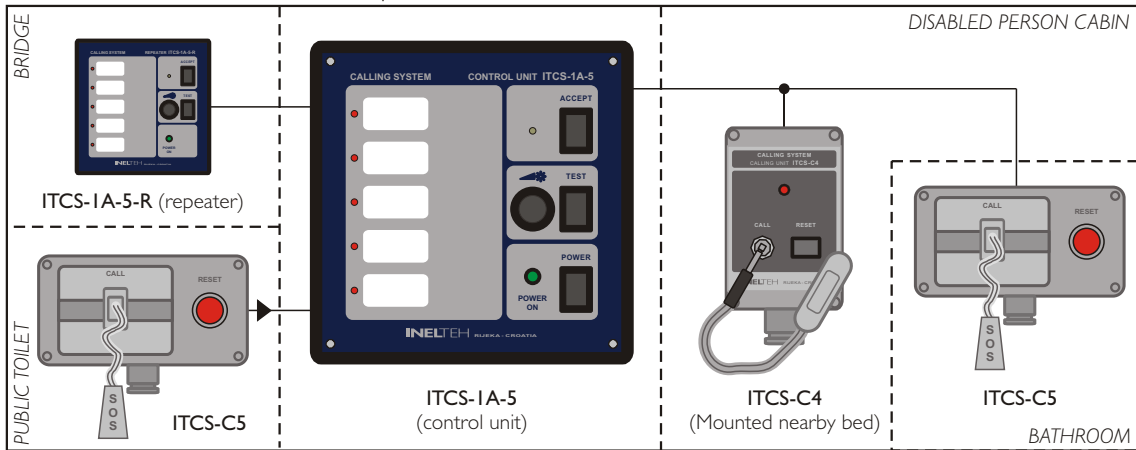
- Mostly used in refrigerator rooms
- Water resistant (IP 56) illuminated push button for call and call reset
- Green bulb in push button "CALL" lights all time (when system is on), to insure visibility in dark spaces
- Red bulb in push button lights when call is done until call is reset
- Bulkhead mounting
- Dimensions: 125x80x60mm



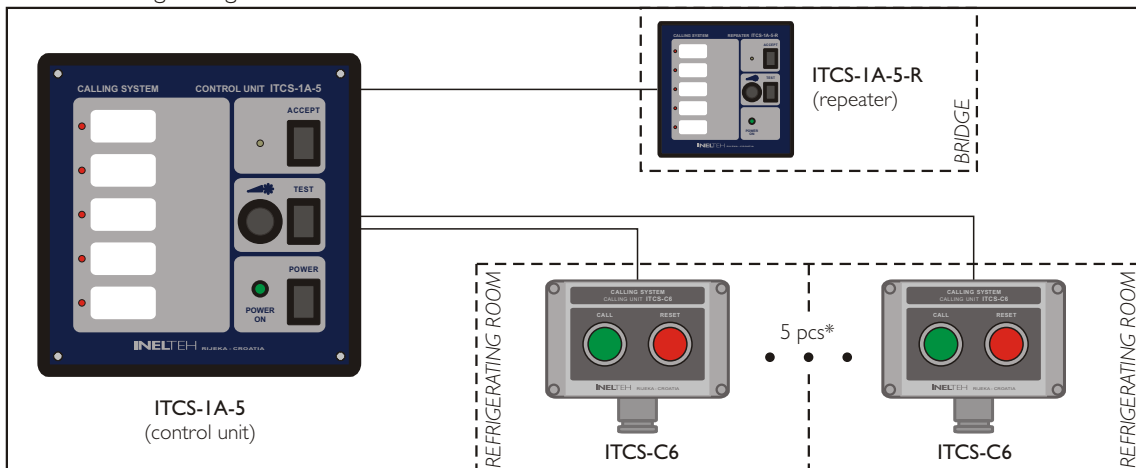
Reset unit ITCS-RS, Signalling unit ITCS-S, Calling units ITCS-C1, ITCS-C2, ITCS-C3, Calling and reset unit ITCS-C4 can also be used (see leaflet **CALLING SYSTEM ITCS, ITCS-A**).

**EXAMPLES**

Call from cabins/toilets for disabled persons



Call from refrigerating rooms



\* 10, 15 pcs with ITCS-IA-10, ITCS-IA-15